

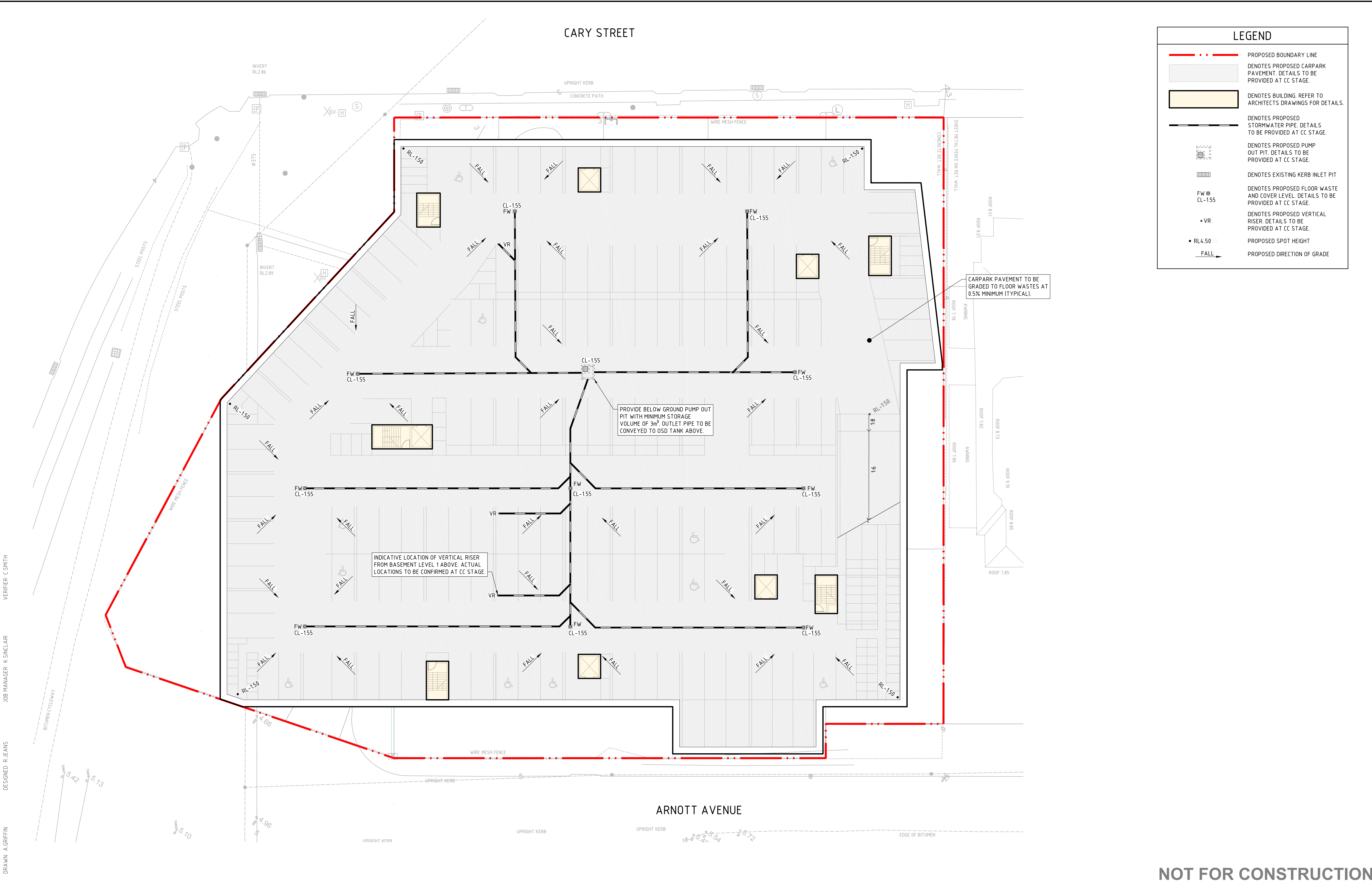


1. ALL WORK IS TO BE CARRIED OUT IN ACCORDANCE WITH RELEVANT ORDINANCES AND REGULATIONS; NOTE IN PARTICULAR THE REQUIREMENTS OF LANDCONS MANAGING URBAN STORMWATER, SOILS AND CONSTRUCTION (THE 'BLUE BOOK').
2. INSTALL SEDIMENT PROTECTION FILTERS ON ALL NEW AND EXISTING STORMWATER INLET PITS IN ACCORDANCE WITH EITHER THE MESH AND GRAVEL INLET FILTER DETAIL S06-11 OR THE GEOTEXTILE INLET FILTER DETAIL S06-12 OF THE 'BLUE BOOK'.
3. ESTABLISH ALL REQUIRED SEDIMENT FENCES IN ACCORDANCE WITH DETAIL S06-8 OF THE 'BLUE BOOK'.
4. INSTALL SEDIMENT FENCING AROUND INDIVIDUAL BUILDING ZONES/AREAS AS REQUIRED AND AS DIRECTED BY THE SUPERINTENDENT.
5. ALL TRENCHES INCLUDING ALL SERVICE TRENCHES AND SWALE EXCAVATION SHALL BE SIDE-CAST TO THE HIGH SIDE AND CLOSED AT THE END OF EACH DAY'S WORK.
6. THE CONTRACTOR SHALL ENSURE THAT ALL VEGETATION (TREE, SHRUB & GROUND COVER) WHICH IS TO BE RETAINED SHALL BE PROTECTED DURING CONSTRUCTION IN ACCORDANCE WITH EPA ARCHITECTS PLANS FOR TREES TO BE KEPT.
7. ALL VEGETATION TO BE REMOVED SHALL BE MULCHED ON SITE AND SPREAD/STOCKPILED AS DIRECTED BY THE SUPERINTENDENT.
8. STRIP TOPSOIL IN AREAS DESIGNATED FOR STRIPPING AND STOCKPILE FOR RE-USE AS REQUIRED ANY SURPLUS MATERIAL SHALL BE REMOVED FROM SITE AND DISPOSED IN ACCORDANCE WITH EPA GUIDELINES.
9. CONSTRUCT AND MAINTAIN ALL MATERIAL STOCKPILES IN ACCORDANCE WITH DETAIL S04-1 OF THE 'BLUE BOOK' INCLUDING CUT-OFF SWALES TO THE HIGH SIDE AND SEDIMENT FENCES TO THE LOW SIDE).
10. ENSURE STOCKPILES DO NOT EXCEED 2.0m HIGH. PROVIDE WIND AND RAIN/EROSION PROTECTION AS REQUIRED IN ACCORDANCE WITH THE 'BLUE BOOK'.
11. PROVIDE WATER TRUCKS OR SPRINKLER DEVICES DURING CONSTRUCTION AS REQUIRED TO SUPPRESS DUST.
12. ONCE CUT/FILL OPERATIONS HAVE BEEN FINALIZED ALL DISTURBED AREAS THAT ARE NOT BEING WORKED ON SHALL BE RE-VEGETATED AS SOON AS PRACTICABLE.
13. THE CONTRACTOR SHALL BE RESPONSIBLE FOR KEEPING A DETAILED WRITTEN RECORD OF ALL EROSION & SEDIMENT CONTROLS ON-SITE DURING THE CONSTRUCTION PERIOD. THIS RECORD SHALL BE UPDATED ON A DAILY BASIS & SHALL CONTAIN DETAILS ON THE CONDITION OF CONTROLS AND ANY/ ALL MAINTENANCE, CLEANING & BREACHES. THIS RECORD SHALL BE AVAILABLE AT ALL TIMES AT THE SITE AND SHALL BE MADE AVAILABLE FOR INSPECTION BY THE PRINCIPAL CERTIFYING AUTHORITY AND THE SUPERINTENDENT DURING NORMAL WORKING HOURS.

CONSTRAINT	VALUE
SEDIMENT TYPE	0
SOIL HYDROLOGY GROUP	B
K = SOIL ERODIBILITY (K-FACTOR)	0.040
R = RAINFALL EROSIVITY (R-FACTOR)	2720
S = 2 YEAR, 6 HOUR STORM INTENSITY	11.2mm/hr
LS = SLOPE LENGTH/GRADIENT	0.95 (85m SLOPE @ 3.1% GRADE)
P = EROSION CONTROL PRACTICE (P-FACTOR)	1.3 (TYPICAL)
C = GROUND COVER (C-FACTOR)	1.0 (TYPICAL FOR STRIPPED SITE)
SOIL LOSS (RUSLE METHOD) (tonnes/ha/yr)	134
EROSION HAZARD (TABLE 4.2 BLUE BOOK)	VERY LOW

NOT FOR CONSTRUCTION

REVISION		DESCRIPTION		ISSUED	VER'D	APP'D	DATE	CLIENT	ARCHITECT		PROJECT	DRAWING TITLE		JOB NUMBER			
A	ISSUED FOR DA APPROVAL			AG	CS	RJ	29.11.17	TORONTO INVESTMENTS NO.1	Mark Lawler Architects. <small>DIRECTOR + HOMOLOGATED ARCHITECT: MARK LAWLER (P746) ASSOCIATE: STEPHEN COON 21 NORTH STREET, CHARLESTOWN NSW 2290 MO: 91 276 853 830 E: newcastle@marklawlerarchitects.com.au marklawler@marklawlerarchitects.com.au</small>		118 CARY STREET TORONTO, NSW, 2283	EROSION AND SEDIMENT CONTROL PLAN		NL171556			
B	ISSUED FOR DA APPROVAL			LS	CS	RJ	09.02.18										
C	RE-ISSUED FOR DA APPROVAL			CH	CS	RJ	12.07.18										
DRAWING NOT TO BE USED FOR CONSTRUCTION UNLESS VERIFICATION SIGNATURE HAS BEEN ADDED								THE COPYRIGHT OF THIS DRAWING REMAINS WITH NORTHROP CONSULTING ENGINEERS PTY LTD.								DRAWING SHEET SIZE = A1	



DRAWN: A. GRIFFIN
DESIGNED: R. JEANS
JOB MANAGER: K. SINCLAIR
VERIFIER: C. SMITH

REVISION	DESCRIPTION	ISSUED	VER'D	APP'D	DATE
A	ISSUED FOR DA APPROVAL	AG	CS	RJ	29.11.17
B	ISSUED FOR DA APPROVAL	AG	CS	RJ	09.02.18
C	RE-ISSUED FOR DA APPROVAL	CH	CS	RJ	12.07.18

TORONTO INVESTMENTS NO.1
DRAWING NOT TO BE USED FOR CONSTRUCTION UNLESS VERIFICATION SIGNATURE HAS BEEN ADDED

ARCHITECT Mark Lawler Architects. <small>DIRECTOR & NOMINATED ARCHITECT: MARK LAWLER (AP746) ARCHITECT: SIMONE COOK 33 SMITH STREET, CHARLESTOWN NSW 2290 PH: 02 4943 1777 WWW.MARKLAWLERARCHITECTS.COM.AU</small>	CLIENT TORONTO INVESTMENTS NO.1
---	---

ALL SETOUT TO ARCHITECT'S DRAWINGS. DIMENSIONS TO BE VERIFIED WITH THE ARCHITECT AND ON SITE BEFORE MAKING SHOP DRAWINGS OR COMMENCING WORK. NORTHROP ACCEPTS NO RESPONSIBILITY FOR THE USABILITY, COMPLETENESS OR SCALE OF DRAWINGS TRANSFERRED ELECTRONICALLY.
PLANS 1:200 0 2 4 6 8 10m

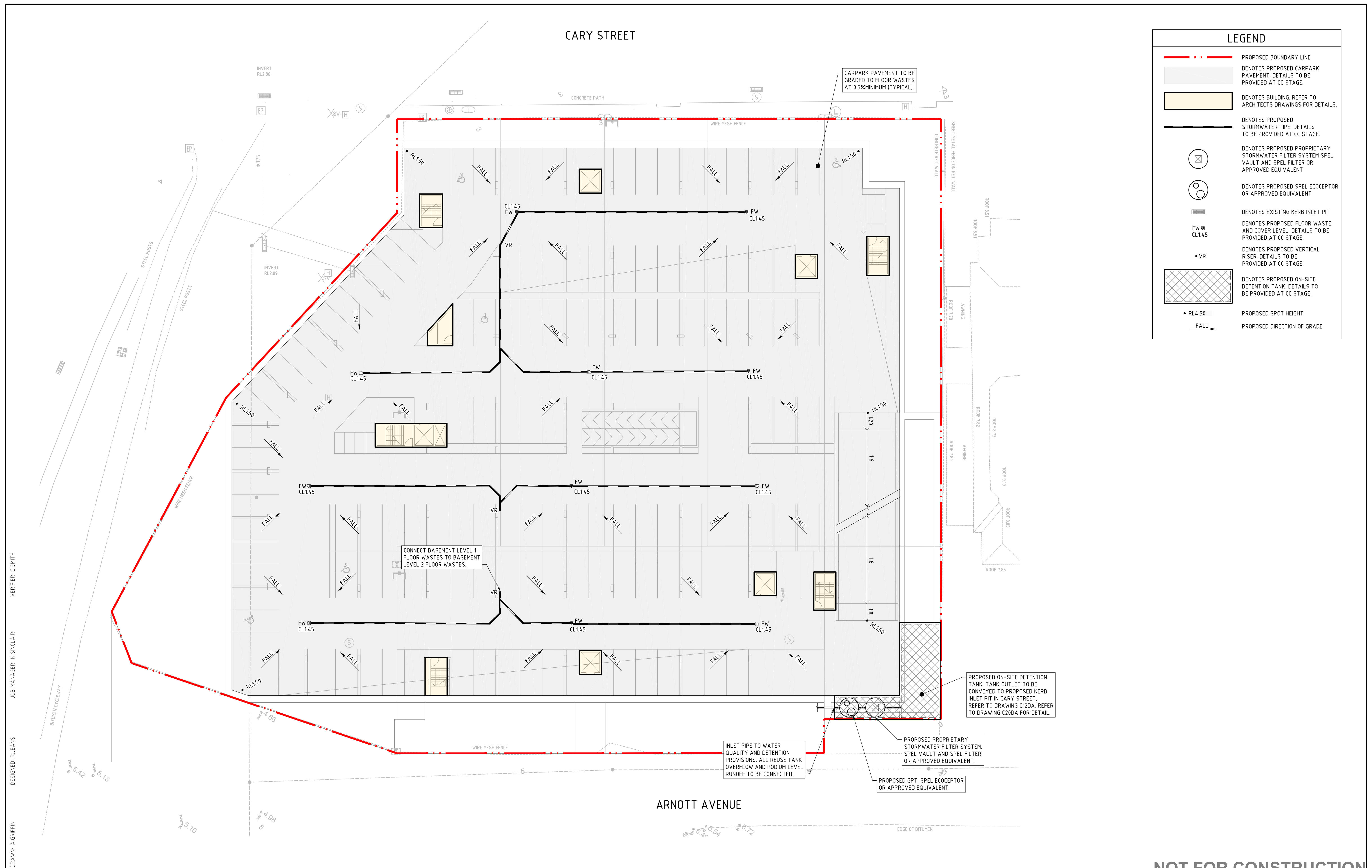
**NORTHROP**
Newcastle
Suite 4, 215 Pacific Hwy, Charlestown NSW 2290
P.O. Box 180, Charlestown NSW 2290
Ph (02) 4943 1777 Fax (02) 4943 1577
Email newcastle@northrop.com.au ABN 81 094 433 100

PROJECT 118 CARY STREET TORONTO, NSW, 2283
--



DRAWING TITLE STORMWATER MANAGEMENT AND LEVELS PLAN - BASEMENT 2
--

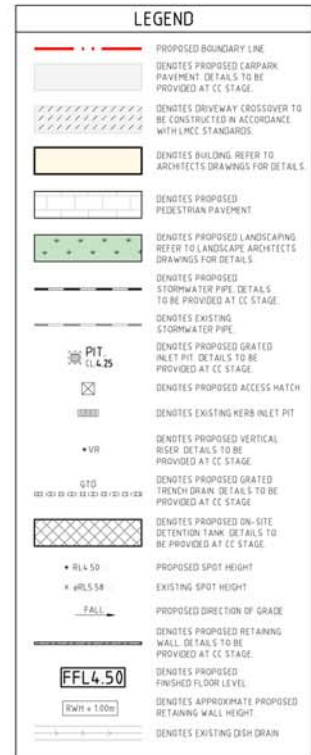
JOB NUMBER NL171556	REVISION C
DRAWING NUMBER C10DA	DRAWING SHEET SIZE = A1

NOT FOR CONSTRUCTION



DRAWN: A. GRIFFIN
DESIGNED: R. JEANS
JOB MANAGER: K. SINCLAIR
VERIFIER: C. SMITH

REVISION		DESCRIPTION		ISSUED	VER'D	APP'D	DATE	CLIENT	ARCHITECT		ALL SETOUT TO ARCHITECT'S DRAWINGS. DIMENSIONS TO BE VERIFIED WITH THE ARCHITECT AND ON SITE BEFORE MAKING SHOP DRAWINGS OR COMMENCING WORK. NORTHROP ACCEPTS NO RESPONSIBILITY FOR THE USABILITY, COMPLETENESS OR SCALE OF DRAWINGS TRANSFERRED ELECTRONICALLY.		PROJECT	DRAWING TITLE	JOB NUMBER							
1	ISSUED FOR INFORMATION		AG	CS	RJ	27.09.17	NL171556															
A	ISSUED FOR DA APPROVAL		AG	CS	RJ	29.11.17	DRAWING NUMBER								REVISION							
B	ISSUED FOR DA APPROVAL		LS	CS	RJ	09.02.18																
C	RE-ISSUED FOR DA APPROVAL		CH	CS	RJ	12.07.18																
								TORONTO INVESTMENTS NO.1	<div>ARCHITECT MARK LAWLER ARCHITECTS 1500 SHEPPARD AVENUE EAST, SUITE 2000 TORONTO, ONTARIO M2N 6L2 TEL: 416-376-8330 WWW.MARKLAWLERARCHITECTS.COM</div>	<div>RECEIVED & VERIFIED ASSOCIATE: STEPHEN COON 1500 SHEPPARD AVENUE EAST, SUITE 2000 TORONTO, ONTARIO M2N 6L2 TEL: 416-376-8330 WWW.MARKLAWLERARCHITECTS.COM</div>	<div>PLANS 1:200 0 2 4 6 8 10m</div>	Suite 4, 215 Pacific Hwy, Charlestown NSW 2280 P.O. Box 180, Charlestown NSW 2280 Ph: (02) 4943 1777 Fax: (02) 4943 1577 Email: newcastle@northrop.com.au ABN 81 094 433 100	118 CARY STREET TORONTO, NSW, 2283	STORMWATER MANAGEMENT AND LEVELS PLAN - BASEMENT 1	DRAWING SHEET SIZE = A1							
DRAWING NOT TO BE USED FOR CONSTRUCTION UNLESS VERIFICATION SIGNATURE HAS BEEN ADDED								THE COPYRIGHT OF THIS DRAWING REMAINS WITH NORTHROP CONSULTING ENGINEERS PTY LTD.														



**STORMWATER MANAGEMENT
AND LEVELS PLAN
- GROUND FLOOR**

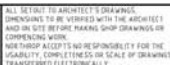
DRAWING NUMBER	REVISION
0105A	5

C12DA	E
DRAWING SHEET SIZE = A1	

REV	VISION	DESCRIPTION	ISSUED	VERD	APP'D	DATE	CLIENT
1		ISSUED FOR INFORMATION	AQ	CS	RJ	27.09.17	TORONTO INVESTMENTS NO.1
A		ISSUED FOR DA APPROVAL	AQ	CS	RJ	29.11.17	
B		ISSUED FOR DA APPROVAL	LS	CS	RJ	09.02.18	
C		RE-ISSUED FOR DA APPROVAL	CH	CS	RJ	12.07.18	
D		RE-ISSUED FOR DA APPROVAL	LS	CS	RJ	17.06.19	
E		RE-ISSUED FOR DA APPROVAL	LS	CS	RJ	18.06.19	

DRAWING NOT TO BE USED FOR CONSTRUCTION UNLESS VERIFIED
SIGNATURE: HALIMA BAKHAR

THE COPYRIGHT OF THIS DRAWING REMAINS WITH NORTHROP CONSULTING ENGINEERS PTY LTD.



NORTHROP
Newcastle
Suite 4, 215 Pacific Hwy, Charlestown NSW 2290
P.O. Box 180, Charlestown NSW 2290
Ph: (02) 4943 1777 Fax: (02) 4943 1577
Email: newcastle@northrop.com.au ABN 81 094 435 100

PROJECT
118 CARY STREET
TORONTO, NSW. 2283

PUMP-OUT PIT STRUCTURE

RAINWATER HARVESTING TANK

OSD TANK SCHEMATIC